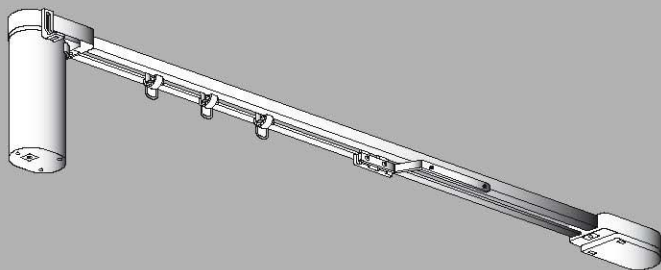


Somfy.com

GLYSTRO KIT



Operating and installation guide

Ref : 5055376B

HOME
MOTION BY

somfy.

Contents

1. Brief introduction to the Glystro Kit

- 1.1 What is the Glystro Kit for?
- 1.2 A few definitions

2. Safety - Important information

- 2.1. Installation and commissioning
- 2.2. Operating
- 2.3. Environment

3. Content of the kit and tools required

- 3.1. List of parts
- 3.2. Tools required.
- 3.3. The Glystro Kit in detail

4. Glystro Kit Mounting

- 4.1. Drive pulley
- 4.2. Mounting the rail
- 4.3. Install the motor on the rail.
- 4.4. Connection of the power supply.
 - 1 Mounting the curtain
 - 2 Programming

- 5.1. Assign a transmitter
- 5.2. Adding a new control point
- 5.3. Replacing a lost or broken control point
 - 5.3.1 Sole control point lost or broken
 - 5.3.2 One lost or broken control point amongst others

6. Use

- 6.1. Open & Close buttons
 - 1 My button
 - 2 Problems with the Glystro Kit?

Somfy's expertise delivers satisfaction guaranteed.

Thank you for choosing a Somfy Glystro Kit. Before installing and using the Glystro Kit, please read these instructions carefully. Somfy solutions animate your windows and entrances to bring your whole house alive. Somfy solutions are designed so that everyone can enjoy the benefits of the products in their home, based on their specific requirements (Products can include awnings, blinds, curtains, garage doors, gates, projection screens, roller shutters). Well thought-out and easy to use, Somfy solutions are one of life's little daily pleasures, making home life more enjoyable.

1. Brief introduction to the Glystro Kit

These instructions describe the installation steps required to make the best use of the Glystro Kit.

What is the Glystro Kit for?

The Glystro kit is a kit to motorise curtains. This Glystro Kit is compatible only with products fitted with Radio Technology Somfy (RTS).

2. Safety - Important information

2.1. Installation and commissioning Before installing and using the Glystro kit, please read these instructions carefully. These instructions describe how to install, commission and operate the Glystro kit. Any incorrect use will invalidate the warranty and the liability of Somfy.

2.2. Operating The motor is designed only for curtains : Never use this motor horizontally, or in any other angular position than vertical. The motor must be fixed vertically behind the track. The track must be fixed horizontally on the wall or the ceiling.

Do not allow children to play with the fixed control points. Keep remote controls out of the reach of children. Do not immerse or soak the motor or the control point in any liquid. Only use maintenance products recommended by Somfy. Frequently check the installation for any defect in balance or any signs of wear. Do not use the curtain if a repair or adjustment is required.

2.3. Environment Damaged electrical or electronic products, such as used batteries, should not be disposed of with the household waste. Please take them to a collection point or an approved centre to ensure they are recycled correctly.

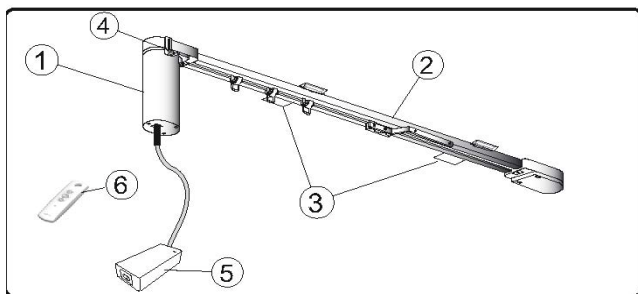
3. Content of the kit and tools required

3.1. List of parts

Before starting the installation and commissioning of the Glystro Kit, check that all parts listed in the table below are present :

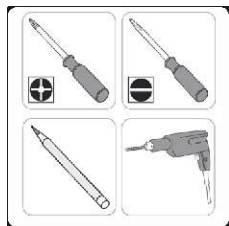
Components

- 1 Motor
- 2 Rail
- 3 Bracket
- 4 Motor Hook
- 5 Power supply
- 6 Remote Control or Decoflex Wall Switch



3.2. Tools required.

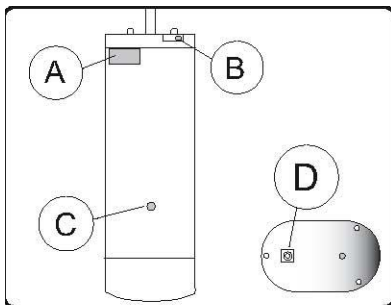
- Phillips screwdriver
- Insulated flathead electricians screwdriver
- Drill and drill bit
- Pencil



3.3. The Glystro Kit in detail

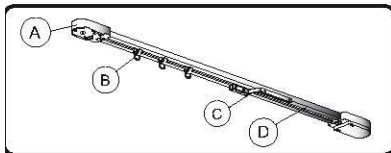
The motor

- A. Set lever
- B. Security lever
- C. Programming button
- D. Power

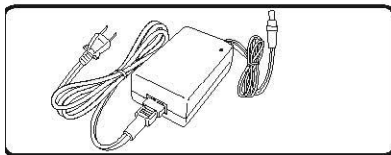


The Glystro rail

- A. Drive pulley
- B. Carrier
- C. Overlap Arm
- D. Rail

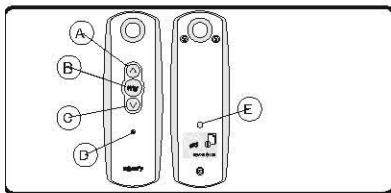


The power supply



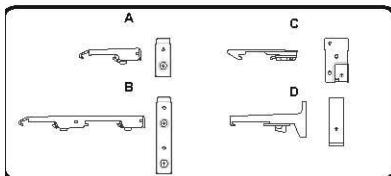
The remote control

- A. Up button
- B. STOP/My button
- C. Down button
- D. Indicator light
- E. Programming button



The Brackets

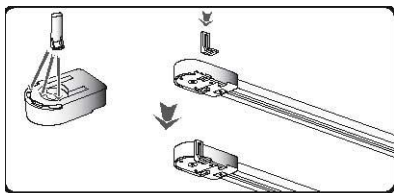
- A. Ceiling Bracket
- B. Double Ceiling Bracket
- C. Wide Ceiling Bracket
- D. Wall Bracket



4. Glystro Kit Mounting

4.1. Motor hook

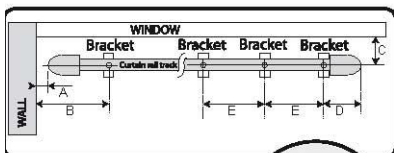
1. Chose the place to fix the motorhook.
2. Fix the motor hook on the drive pulley. This is for the last pleat of drapery panel



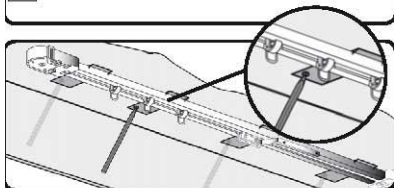
4.2. Mounting the rail

Distances according to the walls and spacing of the brackets:

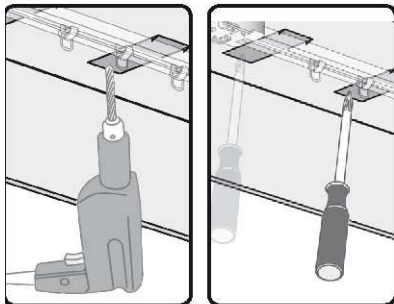
- A = 1 in.
- B = 5 in.
- C = 3.5 in.
- D = 5 in.
- E = 48 in. max



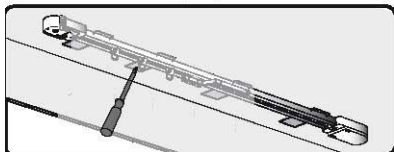
Mark the bracket place with a pencil.



Pierce the ceiling or the wall at the right places and affix the brackets using the appropriate wall anchors or fasteners that are capable of holding the weight of the drapery.

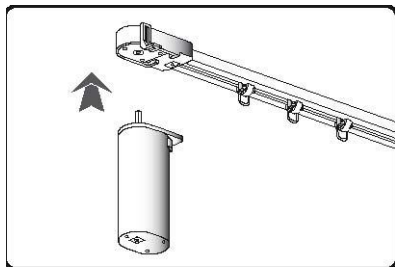


Fix the rail on the brackets. Once rail is in all brackets, tighten set screw on backside of bracket to prevent rail from falling out.



4.3. Install the motor on the rail.

Insert the motor shaft in the drive pulley hole and lock the motor into place.

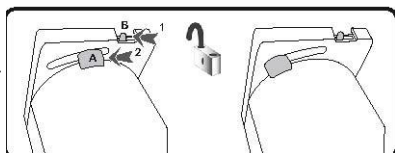


To lock the motor, push on the Set lever (A) and slide to right.



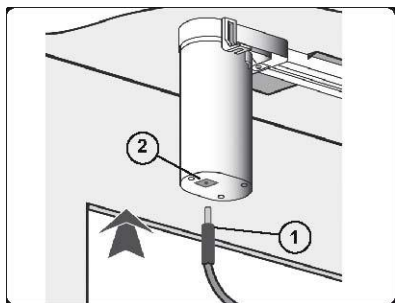
To unlock the motor:

1. push on the security lever B
2. Push and slide on the Set lever (A)



4.4. Connection of the power supply.

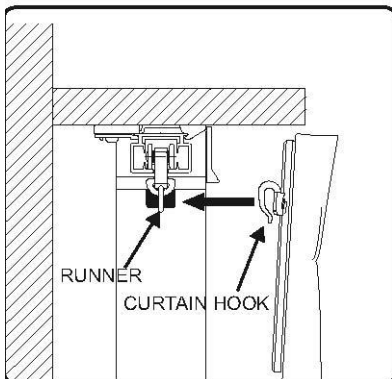
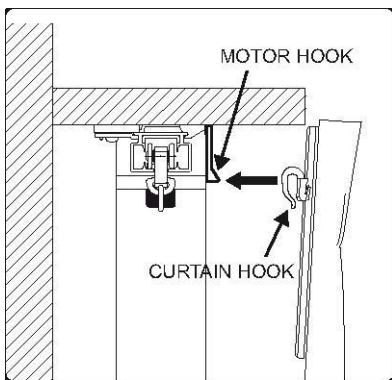
Plug the power supply jack (1) into the motor (2). Plug the connector of the power lead into the other end of the power pack and plug the 3-pin plug into the electricity supply wall switch.



4.5. Mounting the curtain

To fix the curtain, you need to:

1. Insert the curtain hook into the motor hook.
2. Insert the curtain hook into all the runners of the Glystro rail.
3. Track is designed for drapery to hang **below** track



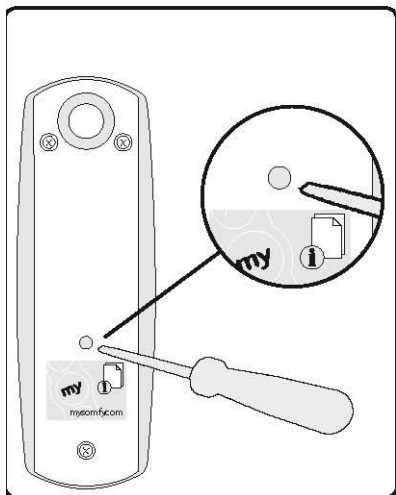
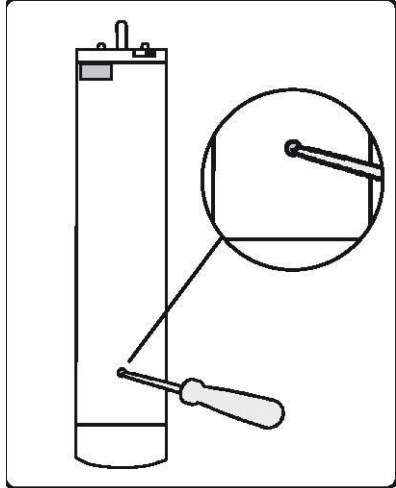
5. Programming

5.1. Assign a transmitter

With a small screwdriver or straightened paperclip, press the motor programming button until the curtain moves briefly.

Then, press the programming button on the back of the remote control until the curtain moves briefly.

The transmitter address is recorded. When the remote control is recorded, the Glystro Kit is ready to use.



5.2. Adding a new control point

To add a control point, use the control point linked to the curtain which controls only this curtain.

Caution! If there is no longer a control point linked to the curtain (all the control points are broken or have been lost), contact the Somfy assistance service.

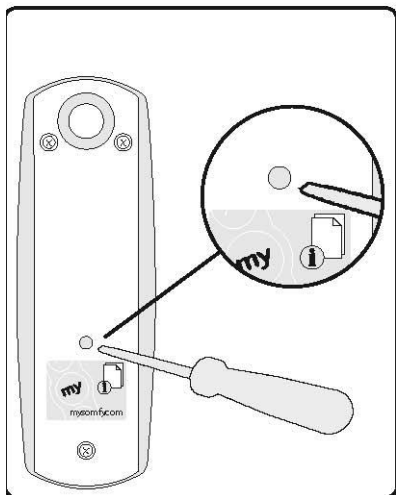
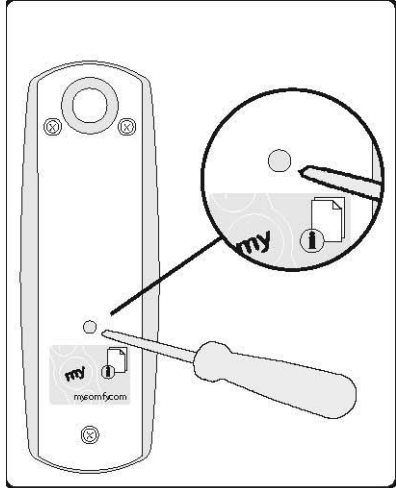
Place the curtain in the midway position before installing the new control point so that the movements can be easily seen.

a. Press the programming button on the back of the existing RTS transmitter. The motor moves briefly -Jogs.

b. Press the programming button on the back of the new control point. The motor moves briefly- Jogs.

The new control point is recorded.

Caution: If the curtain does not make a brief movement, please contact the Somfy assistance service.



5.3. Replacing a lost or broken control point

If the original control point is lost or broken, there are two possible situations: The lost or broken control point is the only control point for the curtain. The lost or broken control point is not the only one which controls the curtain.

5.3.1. Sole control point lost or broken

Contact the Somfy assistance service so they can provide guidance for the replacement of the sole lost or broken control point.

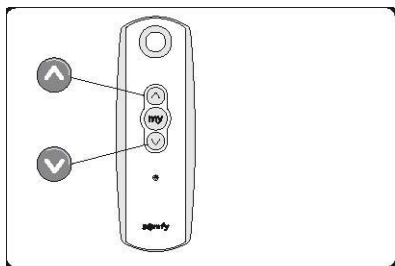
5.3.2. One lost or broken control point amongst others

Find one of the control points linked to the curtain. Follow the steps described in the section «Adding a new control point». N.B.: If, after having followed this operation, there is not a brief movement of the curtain, contact the Somfy assistance service so they can provide guidance for the replacement.

6. Use

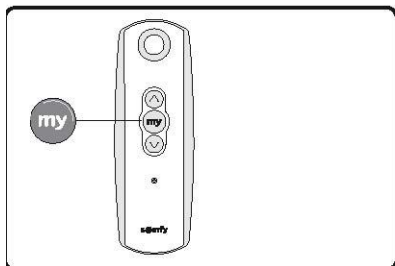
6.1. Open & Close buttons

Press the Up button : the curtain moves and automatically stops in the closed position.
Press the Down button: the curtain moves and automatically stops in the open position.



6.2. My button-Preferred Setting

Move the drapery to a preferred stopping point. Press the 'My' button till the drapery jogs (about 5-seconds). Pressing the 'My' button now will move the drapery to this preferred stopping point.
To delete setting, move to preferred setting then press 'My' button until drapery jogs.



7. Problems with the Glystro Kit?

Problem	Possible causes	Solutions
The curtain does not move after a button on the control point is pressed.	The control point is too far away from the curtain to be controlled.	Move it closer to the curtain and press a button on the control point again. If it still does not work, replace the battery.
The curtain does not move after a button on the control point is pressed.	The control point battery is weak.	Replace the battery with a battery having identical specifications.
The curtain is closed when the Down button is pressed. The curtain is open when the Up button is pressed.	The control point is held upside down.	Turn the control point so that the indicator light is below the Up/my/Down buttons.
The curtain does not move.		Contact the Somfy assistance service.

For any unresolved questions or problems, please contact the Somfy assistance service in the number given on the back cover of these instructions.

Somfy Technical Assistance 800-647-6639